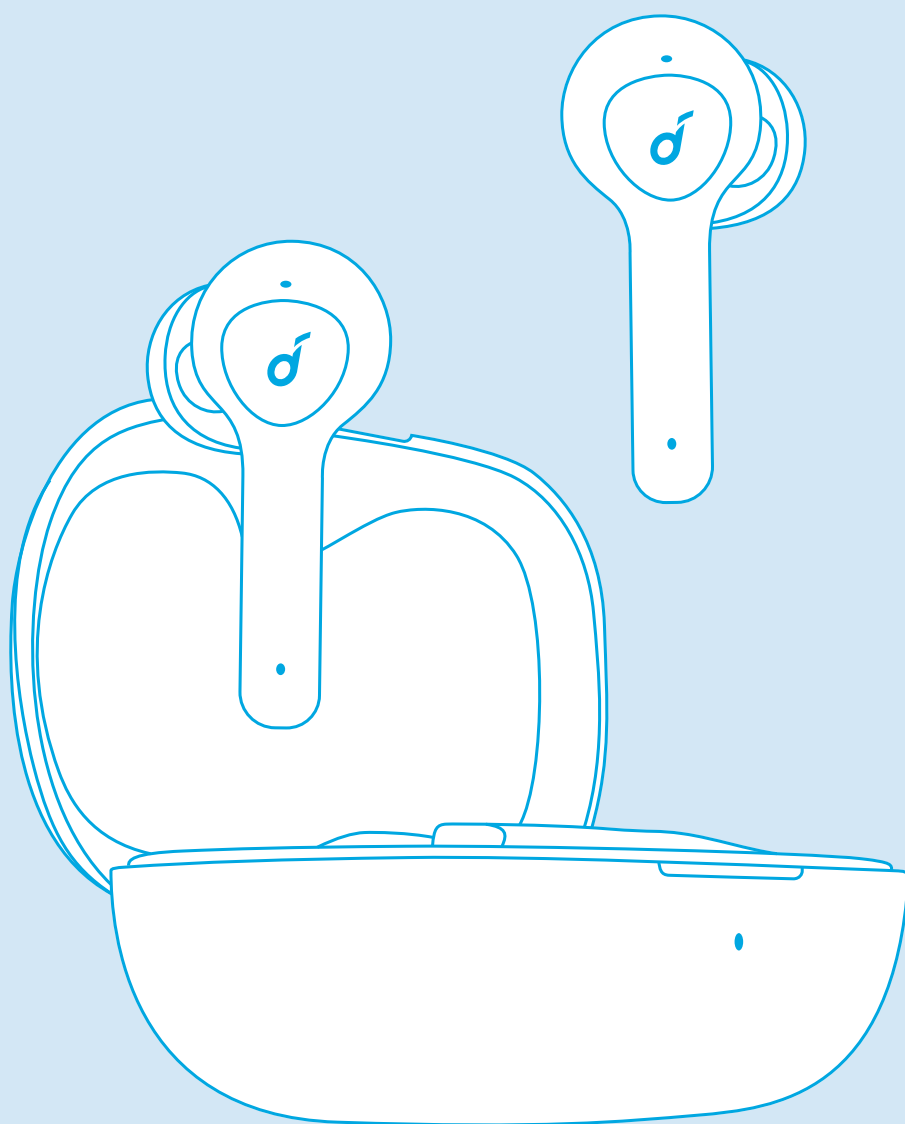


soundcore

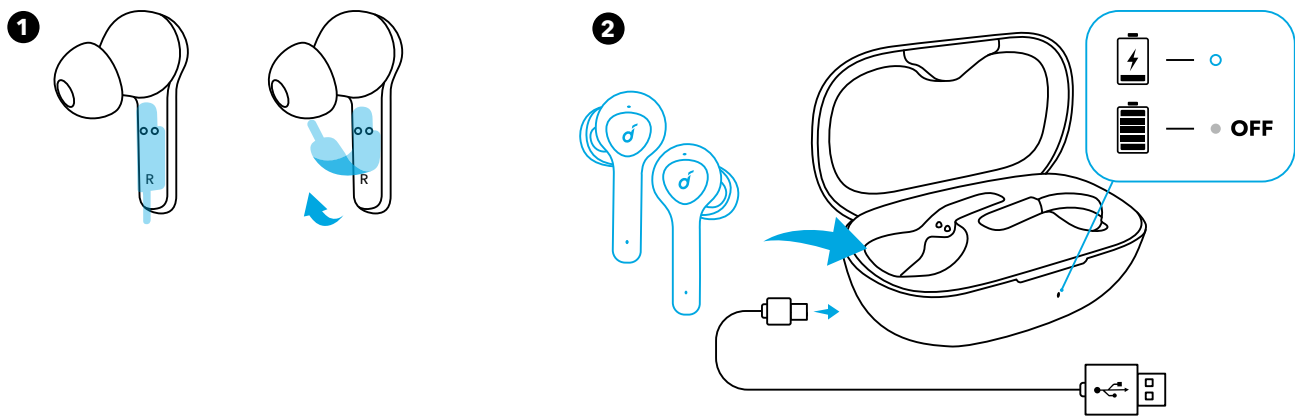


Soundcore Life P2

USER MANUAL

Charging

- Remove the protective film from the earbuds when using for the first time.
- Fully charge both the earbuds and the charging case before the first use.
- To prevent damage, use the provided USB-C cable.
- Fully dry off the earbuds and the USB port before charging.

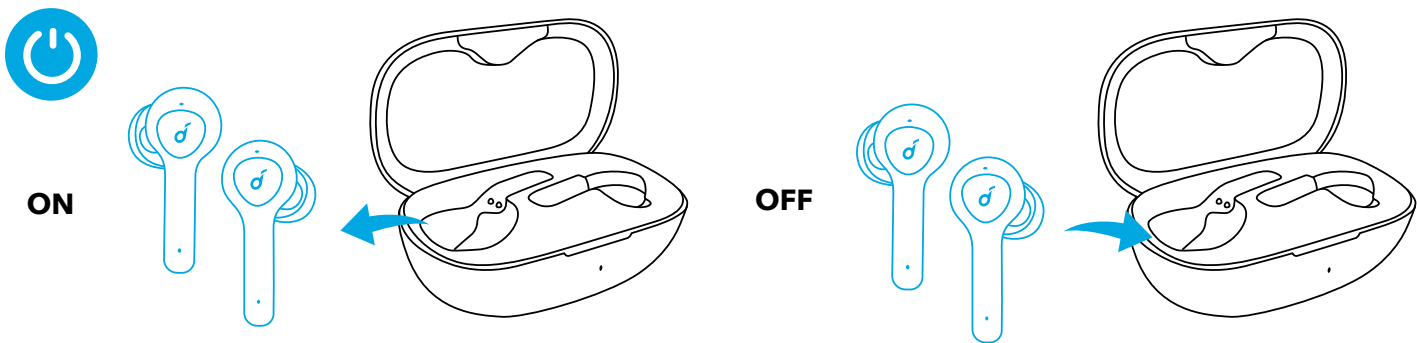


LED indicators (Earbuds & Charging case)

○	Steady white	Being Charging
●	Light off	<ul style="list-style-type: none">• Fully charged• Remaining battery >10% (when in use)

Powering On/Off

The earbuds will automatically power on when taken out of the charging case and power off when placed back into the charging case.



LED indicators (Earbuds)

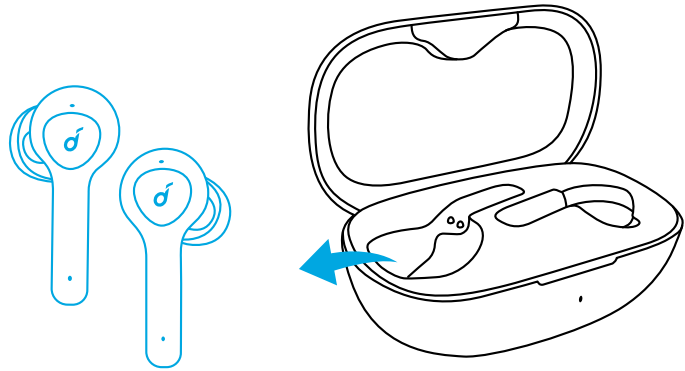
ON	○	Steady white for 1 second
OFF	●	Steady red for 1 second

- To manually power on, press the multi-function button on either one of the earbuds.
- To manually power off, press and hold the multi-function button on either one of the earbuds for 3 seconds.

Pairing

True Wireless Stereo Connection

The right earbud will automatically connect with the left earbud when taken out of the charging case.



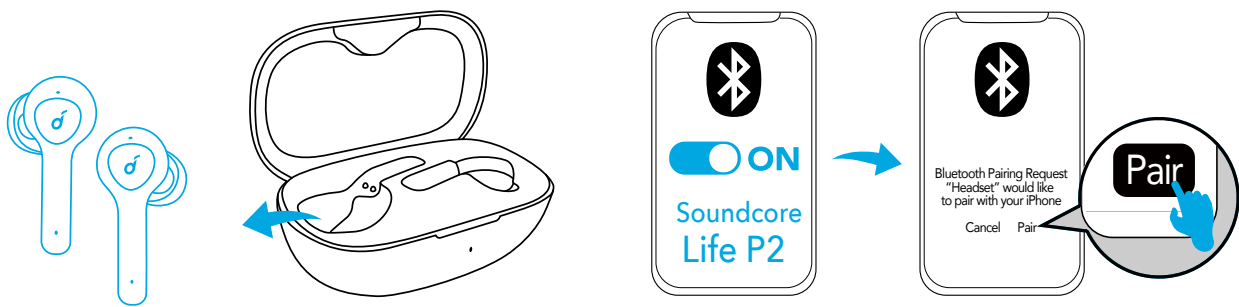
LED indicators (Earbuds)

	Breathing white	TWS connecting
	Steady white for 1 second	TWS connected


- When powered off, press and hold the multi-function button on both earbuds for 1 second, the earbuds will enter TWS connecting mode.
- When powered on and connected, place either one of the earbuds into the charging case, you can keep using the other one.
- When powered on and connected, if either one of the earbuds is out of battery and powered off, you can keep using the other one.
- When you are on a call, place either one of the earbuds into the charging case, 3 to 5 seconds later, the microphone in the other earbud will be activated.

Bluetooth Pairing with your Device

The earbuds will enter pairing mode when powered on. You are requested to confirm the connection when you see a pop-up.




LED indicators (Earbuds)

	Flashing white	Bluetooth pairing
	Steady white for 1 second	Bluetooth connected

In the pairing process, some devices are incompatible with Qualcomm True Wireless Primary-Secondary dual pairing names, it may notice “connection unsuccessful” when you tap “Pair” or even no screen pops up. Don’t worry and it will not influence the using.

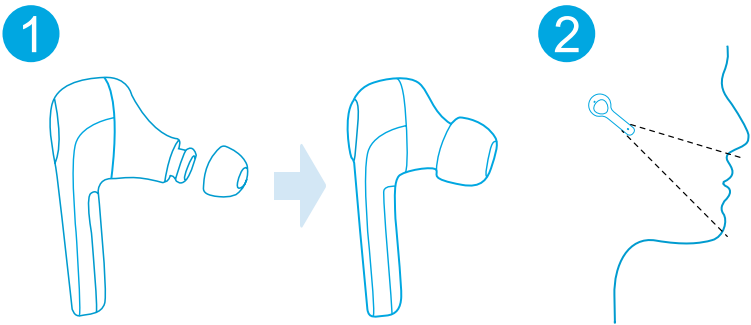
Once successfully paired, the primary earbud connects with your device and transfers signal to the secondary earbud, the latter one will not connect with your device. As a result, in the Bluetooth pairing list on your device, it may indicate that only one side is connected while the other side is not.

BLUETOOTH 	
Soundcore XXX	Connected
Soundcore XXX-L	Not Connected




- To pair with another Bluetooth device, turn off Bluetooth on the currently connected device first.
- Each time you power on your Soundcore earphones, it will automatically connect to your last successfully connected device if available within the Bluetooth range.



Wearing


1. Choose the EarTips that fit your ears best.
2. Insert the earbuds into the inner canal of your ears.
3. Turn and find the most comfortable position.



Controls

🎵		
Play / Pause		Press (R/L)
Next track		Press twice (R)
Previous track		Press twice (L)
Volume up / down	Control volume via the connected device	

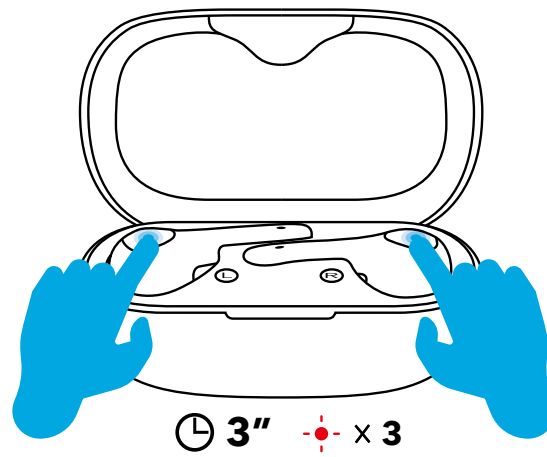
📞		
Answer / End a call		Press (R/L)
Reject a call		Press and hold for 1 second (R/L)
Enable mono mode	Remove either one of the earbuds off your ear and press and hold the button on the other earbud for 1 second	

🎤		
Activate Siri or other voice assistant software		Press and hold for 1 second (R/L)

Reset

Reset the earbuds if the earbuds cannot connect with each other properly or cannot connect with your device properly.

1. Place the earbuds into the charging case and make sure they are being charged.
 2. Press and hold the button on both earbuds for 3 seconds until the LED indicators flash red 3 times and then turn white.
- ➔ All the memory data will be cleared.



Specifications

Specifications are subject to change without notice.

Input	5 V $\overline{\text{---}}$ 500 mA
Rated output power	7 mW @ 1% THD
Battery capacity	55 mA x 2 (earbuds); 700 mA (charging case)
Charging time	2 hours
Playtime (varies by volume level and content)	7 hours (Totally 40 hours with the charging case)
Driver size	6 mm x 2
Frequency response	20 Hz - 20 kHz
Impedance	16 Ω
Bluetooth version	V 5.0
Bluetooth range	10 m / 33 ft

Qualcomm® aptX™ Technical specifications

Compression ratio: 4:1

Word depth: Support 16bit and 24bit

Decoding delay: Sample rate 48kHz<2ms

Dynamic range: 16bit>92dB, 24bit>120dB

Data rates: 352kbps

Decode mode: Stereo

Qualcomm aptX is a product of Qualcomm Technologies, Inc. and/or its subsidiaries. Qualcomm is a trademark of Qualcomm Incorporated, registered in the United States and other countries. aptX is a trademark of Qualcomm Technologies International, Ltd., registered in the United States and other countries.