



User Manual

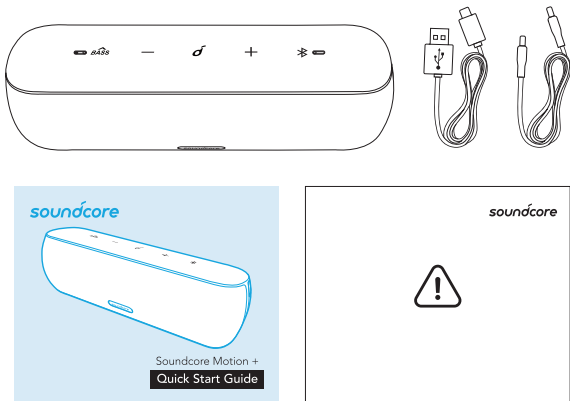
Soundcore Motion+

Benutzerhandbuch | Manual del usuario | Manuel de l'utilisateur
Manuale utente | Manual do Usuário | 取扱説明書 | 사용 설명서
用户手册 | 使用者手冊 | Руководство пользователя
מדריך למשתמש | دليل المستخدم

EN Safety Instructions

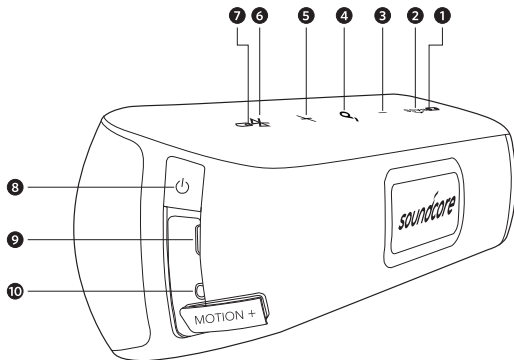
- Avoid dropping.
- Do not disassemble.
- Soundcore Motion+ can be immersed in water up to 1m for up to 30 minutes.
- Avoid extreme temperatures.
- Do not use the device outdoors during thunderstorms.
- Do not use any corrosive cleaner / oil to clean.

What's Included



At a Glance

EN



1 Bass Indicator

Bass indicator color	White
----------------------	-------

2 Bass Button

3 Volume - Button

4 Multi-function Button

5 Volume + Button

6 Bluetooth Button

7 Bluetooth Indicator

Bluetooth indicator color	Blue / White
---------------------------	--------------

8 Power Button / Power Indicator

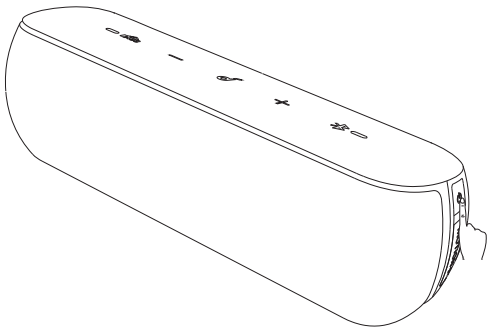
Power indicator color	Red / White
-----------------------	-------------

9 USB Type C Port

10 3.5mm Audio Input Port

EN Using Your Soundcore Motion+

1. Turn On / Off



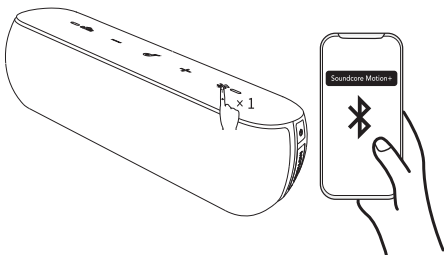
ON	Press once
OFF	Press and hold for 2 seconds

Soundcore Motion+ is equipped with High-Resolution Audio. This specialty gives the speaker a better sound quality by referring to digital processes that allow playback of music using higher sampling rates.

Note: Soundcore Motion+ supports Qualcomm® aptX™.

a. Bluetooth mode

EN



Slowly Flashing Blue
(Fade in and out)

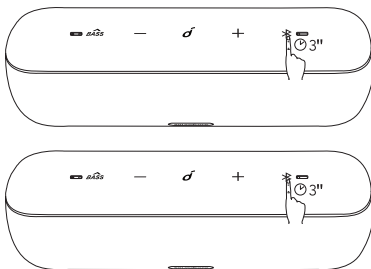
Bluetooth Pairing Mode

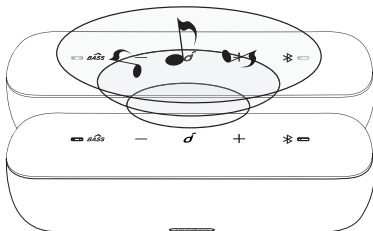
Note: starts to connect to previous connected mobile device when speaker is turned on.



Solid Blue

Connected to a device





Enter True Wireless Stereo Group Mode / Disconnect True Wireless Stereo



Slow Flashing White

True Wireless Stereo Group Mode



Solid White (Secondary speaker)

Connected to True Wireless Stereo



Solid Blue (Primary speaker)



With True Wireless Stereo technology, you can pair your Soundcore Motion+ with another Soundcore Motion+ to explore the best sound effects with left and right sound channels separated on both speakers.

Music



x1 Play / Pause



x2 Play Next Song



x3 Play Previous Song



x1 Press to turn Bass on



Press once to activate bass

Note: Press again to switch back to Normal Equalizer.



Activate Siri / Other Voice Control Software



Volume Up / Down

Mobile phone



Answer Call / End Call



Reject Call / Switch between a call on hold and an active call



End current call and answer incoming call / End current call and switch to call on hold



Switch audio source between Speaker and Phone



Solid Blue

On a Call



Flashing Blue

Incoming Call

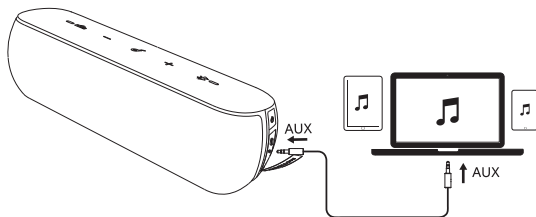


When turned on, Soundcore Motion+ will automatically connect to the last connected device if available. If not, press the Bluetooth button to activate pairing mode.

To pair a different device, press the Bluetooth button to re-enter pairing mode. Then repeat the pairing steps.

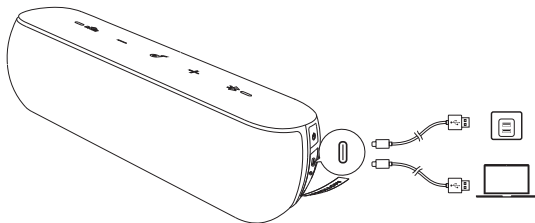
Having connection problems? Remove Soundcore Motion+ from your device's Bluetooth history and ensure it's less than 3 feet away. Then try pairing again. To get the best sound quality, make sure there is a clear line of sight between the connected device and your speaker.

EN b. AUX-In mode



Plugging in an audio cable will automatically switch to AUX mode. When using AUX mode, control audio playback via the connected device.

Charging your Soundcore Motion+





Slow Flashing Red

Low Battery



Solid Red

Charging

Off

Fully Charged

EN



Use the included USB cable to charge your Soundcore Motion+ and make sure it is fully charged before its first use.

USB type C cable only supports charge in, it does not support charge out.

Disconnect your speaker from the charger when fully charged. Do not charge your speaker for extended periods.

When not in use, store your speaker in a cool place.

Specifications



Specifications are subject to change without notice.

Input: 5 V $\overline{\text{---}}$ 2 A

Audio output: 30 W

Battery capacity : max.6700mAh

Charging time : Approximately 4 hours(When power is off and the adapter must be at least 5V/2A)

Playtime (varies by volume level and music content): 12 hours

Size: 257 x 79 x 81 mm / 10.1 x 3.1 x 3.2 inch

Weight (without packaging): 1050 g / 37 oz

Bluetooth version: V 5.0

Bluetooth range: 30m/99ft

Sound Frequency Range: 50Hz~40kHz

Soundcore App



Apple and the Apple logo are trademarks of Apple Inc.



Google Play and the Google Play logo are trademarks of Google Inc.